

Froggy Fun Boy - by Jane Allen



Froggy Fun Girl • by Jane Allen



Froggy Fun • by Jane Allen



Froggy Fun • by Jane Allen

Paint

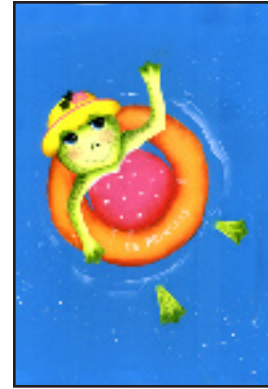
DecoArt Americana
Cadmium Yellow
Calypso Blue
Evergreen
Hauser Green Light
Lamp Black
Lemonade
Orange Twist
Raw Sienna
Spice Pink
Tangelo Orange
Warm White

Brushes

Loew-Cornell, La Corneille
Golden Taklon
Series 7000 no. 3 round
Series 7350 no. 10/0 liner
Series 7400 no. 1/2 inch angle
Series 2014 no. 2 scumbler

Misc

Tracing paper, stylus, pencil,
graphite paper, water bowl,
paper towels, palette paper



Jane Allen
210 Garrett Lane
Camp Hill, PA 17011
E-mail: alandjanie@msn.com

Instructions

Brush Uses

Liner: Thin lines, outlines, and small details.

Round: Use to fill in areas.

Angle: Float color to shade and highlight.

Scumbler: Use to dry brush.

Start with blue box lid or paint Calypso Blue.
Transfer the pattern.

Frogs

Base with Lemonade. Between fingers and toes, base Hauser Green Light.

Shade with a float of Hauser Green Light on the face starting at the top of cheek and shade down to chin. Also shade over the eyes, top of forehead, under chin, down the arms, top of fingers and toes plus in the wedges of fingers and toes. Shade the stomach on the boy frog starting under arms and going down the sides and across the stomach.

With thinned Hauser Green Light and liner brush, place random dots over the shaded areas of both frogs.

Apply dry-brush Spice Pink cheeks using a scumbler or old scruffy brush. Place some pink on stomach and arms also.

Strengthen all shading with a float of Evergreen.

Using thinned Evergreen and a liner, place random dots over shaded areas, small comma strokes for nostrils, wavy line for mouth and outline eyes. Also add a bellybutton on the boy frog.

Paint whites of eyes Warm White, iris with Calypso Blue and pupil with Lamp Black. Use Warm White to add highlight strokes in eye. Line eyelid and lashes with Lamp Black.

Inner tube

Basecoat with Orange Twist. Shade with Tangelo Orange and strengthen with Raw Sienna. Paint lines and lettering on tube with Warm White.

Hat

Basecoat with Cadmium Yellow, shade with a float of Raw Sienna and highlight with a float of Warm White.

Outline brim of boy's hat with Raw Sienna. Paint body of dragonfly Lamp Black, and wings with thinned Warm White.

Paint brim of girl's hat with Spice Pink. Paint

Froggy Fun • by Jane Allen

leaves Evergreen, the outside row of petals Spice Pink, and the inside row a brush mix of Spice Pink + Warm White. Paint the center Cadmium Yellow.

Suit

Basecoat both suits Spice Pink. Paint Cadmium Yellow band and stripes on boy's suit and Warm White dots on girl's suit. Shade with a float of Tangelo Orange.

Details

Float Calypso Blue over foot where it is coming out of the water. Float Warm White loosely around the tube. Place Warm White lines in the water with a liner brush. Flyspeck (spatter) with Warm White over water.

Finishing

Spray with DecoArt Matte Varnish.



Froggy Fun • by Jane Allen

