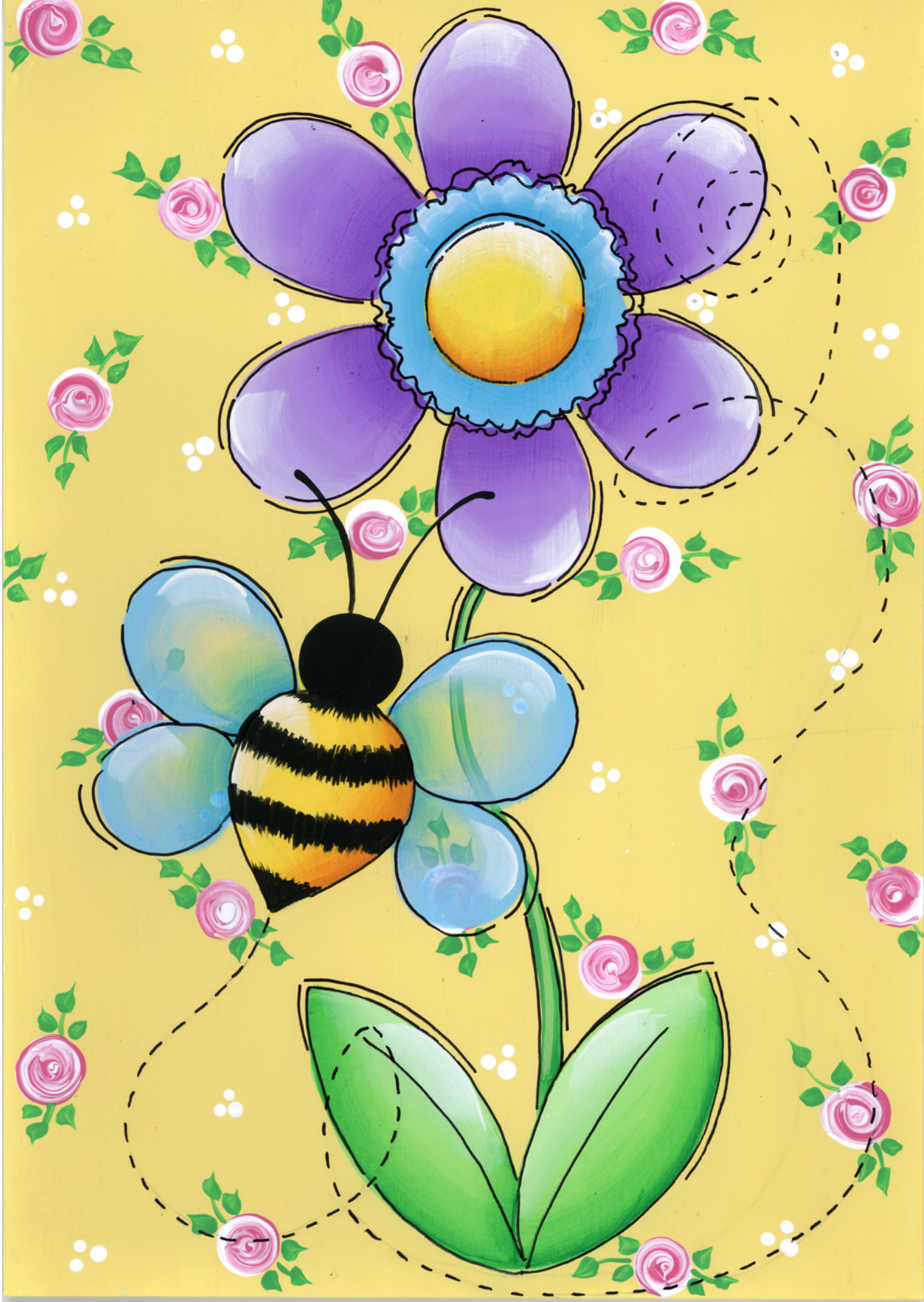


Bee Happy • by Chris Thornton



Bee Happy • by Chris Thornton



Chris Thornton-Deason
PO Box 617

Douglass, KS 67039
E-mail: cricinda@earthlink.net

Paint

Delta Creative Ceramcoat
Acrylic Paint
White
Crocus Yellow
Black
Pop Pink
Pansy
GP Purple
Green
Lime Sorbet
Paradise
Tahiti Blue
Dark Goldenrod
Exterior/Interior Satin Varnish

Brushes

Loew-Cornell La-Corneille
Golden Taklon
Series 7350 no. 1 inch wash
Series 7300 no. 8, 12 shaders
Series 7050 no. 1 script liner

Misc.

Loew-Cornell: palette paper,
water container, tracing paper,
transfer paper.
Also: watercolor paper, paper
towels, black permanent pen

Instructions

Start with a light yellow box or paint light yellow mix of White + Crocus Yellow using 1-inch wash brush.

Apply pattern.

Swirl Roses

Using wooden end of brush, place dot of White and dot of Pop Pink side by side and swirl with wooden end of brush. Place dots randomly and add as many as you like.

Stroke small leaves mix of equal parts Lime Sorbet + Green using a no. 1 liner.

Dots

Dot White using wooden end of brush. Repeat randomly as many times as desired.

Flower

Using a no. 12 shader basecoat petals GP Purple. Float shadows in Pansy and highlights in White + touch GP Purple using same brush.

Basecoat the ruffle around center with Tahiti Blue + White (1:1 mix) using a no. 6 shader. Float a shadow with Tahiti Blue and highlights with White + a touch of Tahiti Blue using the same brush.

Basecoat the center Crocus Yellow using a no. 12 shader. Float Dark Goldenrod for shadows. Float sparkle highlights of White on all parts.

Leaves

Using a no. 12 shader, basecoat the leaves Lime Sorbet. Float shadows using Green and highlights using White + a touch of Lime Sorbet using the

same brush. Make the stem Green using a no. 1 liner, and highlight Lime Sorbet.

Bee

Float wings with Paradise using a no. 6 shader. Float a shadow using Tahiti Blue and highlights with White.

Paint the body with Crocus Yellow using a no. 6 shader. Then float a shadow with Dark Goldenrod and highlights with White using the same brush. Do all Black using a no. 1 liner.

To Finish

Randomly add bees and "Bee Happy!" along sides. Apply as many coats of Satin Varnish as desired using a 1-inch wash brush.

Bee Happy • by Chris Thornton



Bee Happy • by Chris Thornton

